

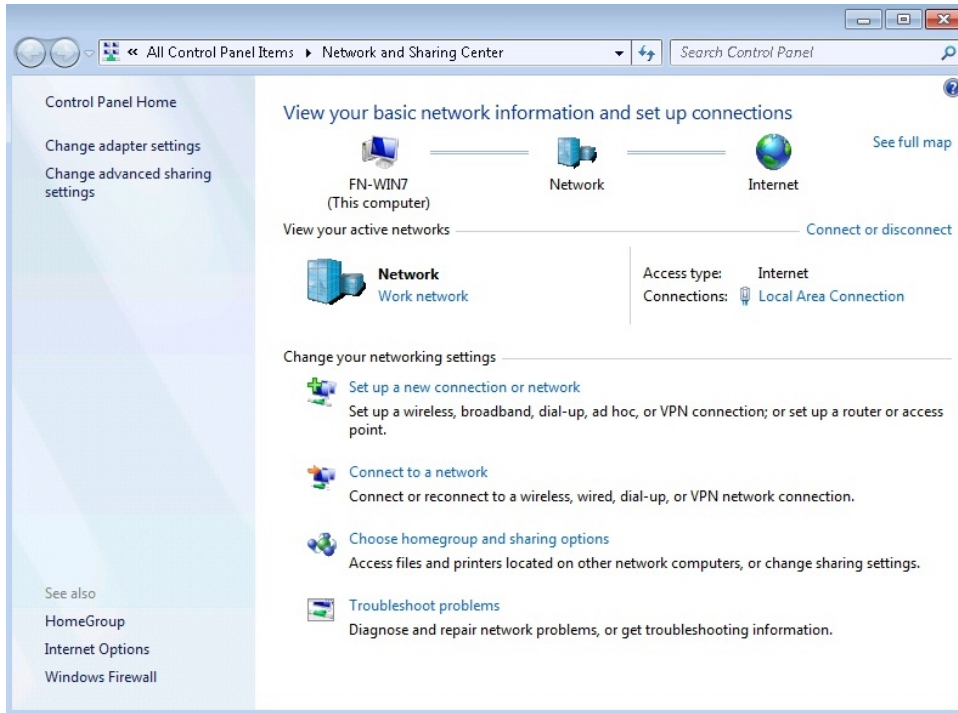


Creating a VPN Connection in Windows 7

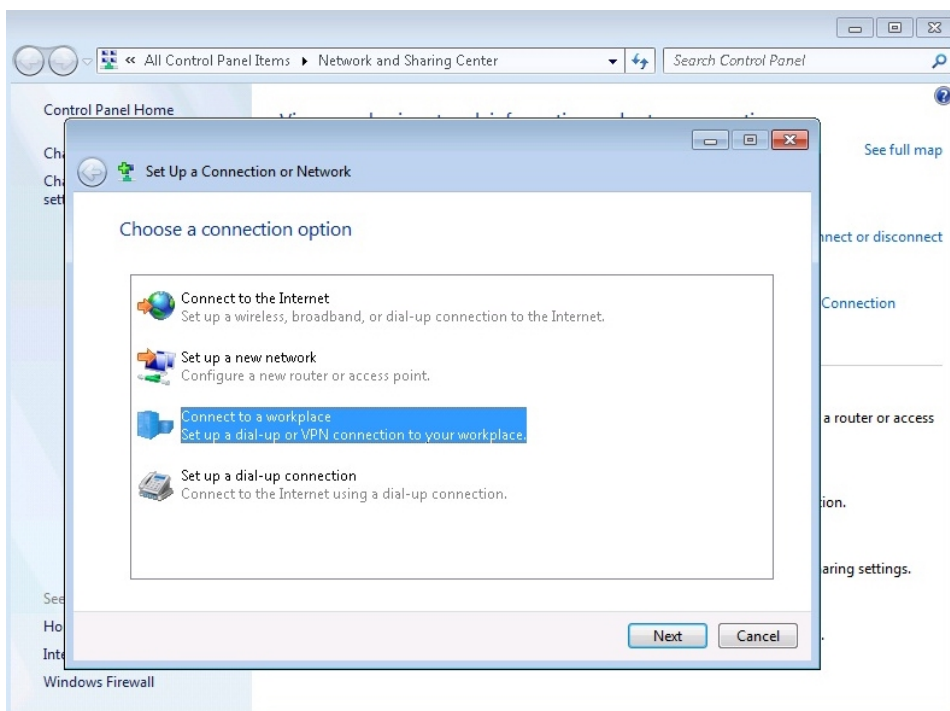
* Default PPTP encryption may need to be adjusted for successful connection

See [Security Changes for Remote Access Scenarios \(VPN\)](#), under [Flint Networking Tech Docs](#)

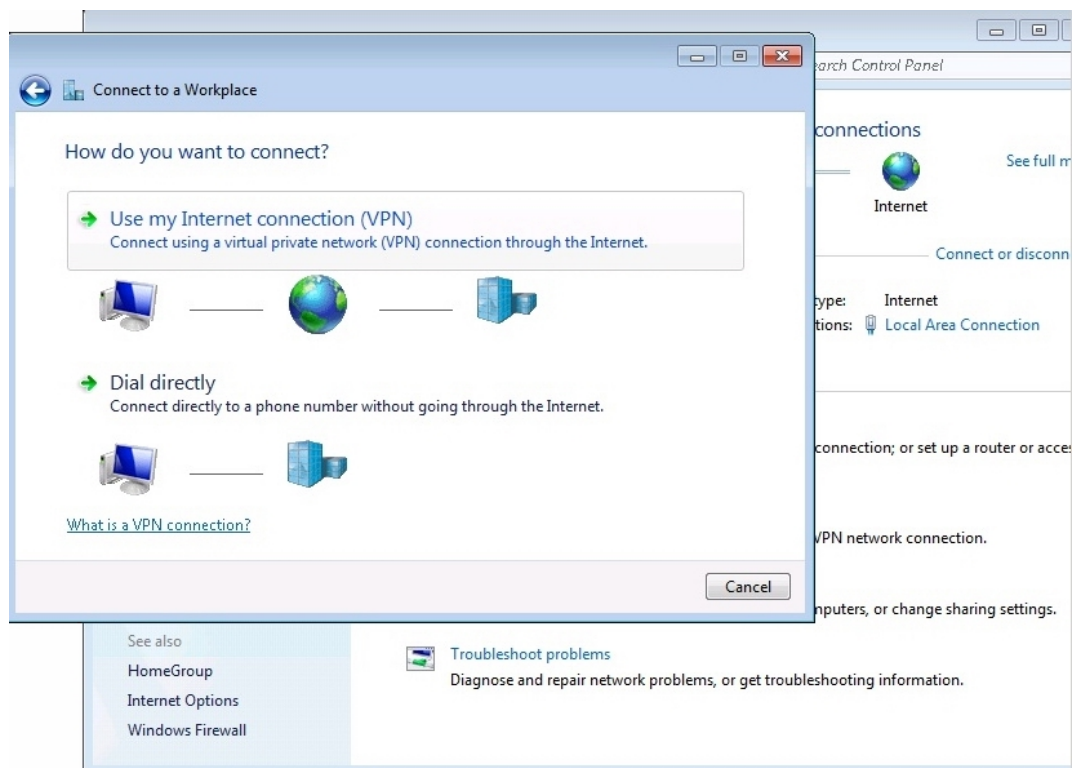
- Click on Control panel and open Network and Sharing Center
- Click Setup a new connection or network



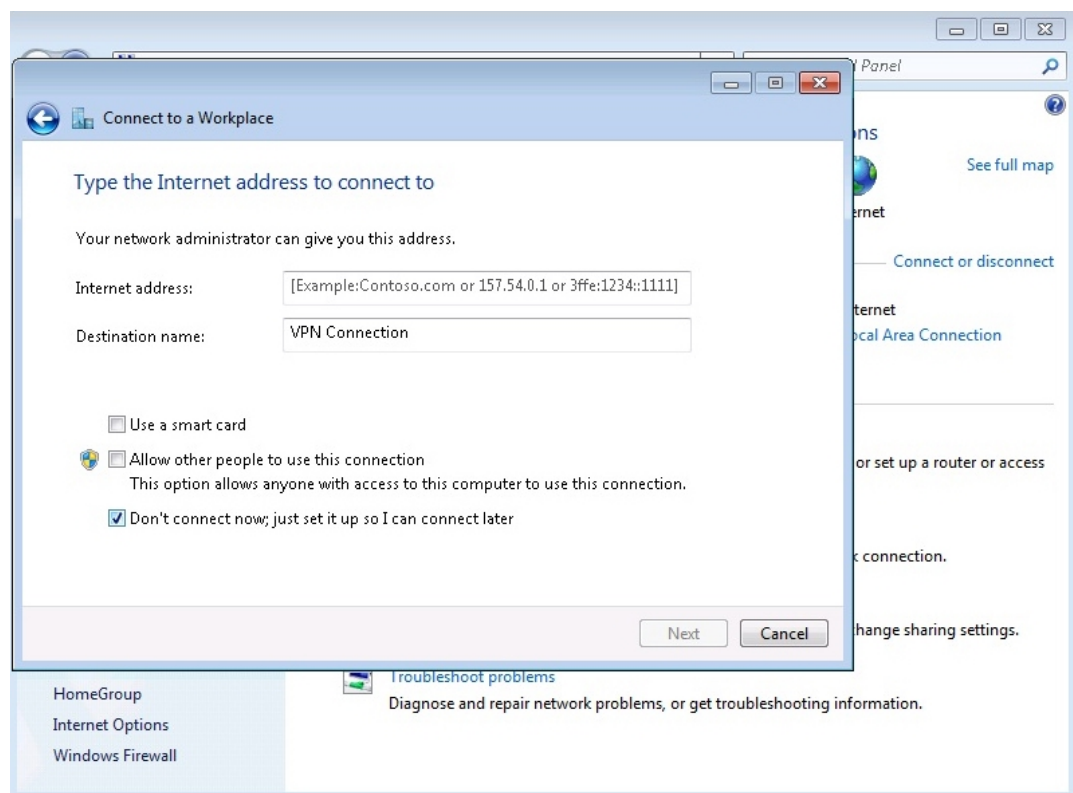
- Select Connect to a Workplace (VPN)



- Select Use My Internet Connection (VPN)



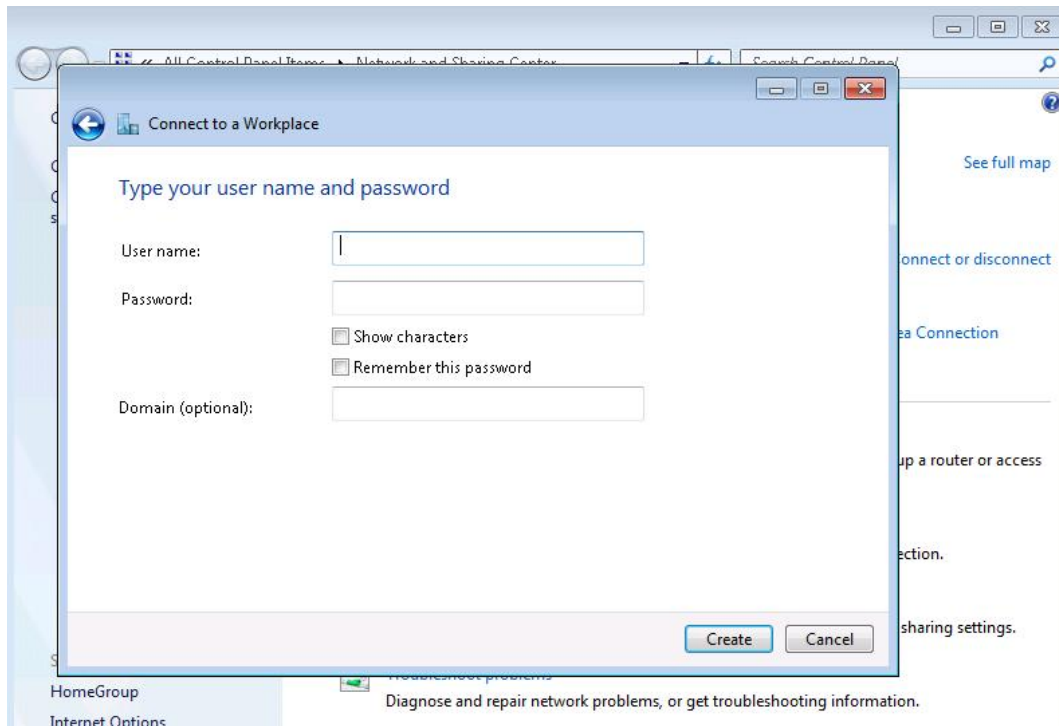
- Enter Internet Address (IP Address or DNS Name)
- Enter Destination Name (Friendly name. i.e. Office VPN)
- Check Don't Connect Now



<Next>

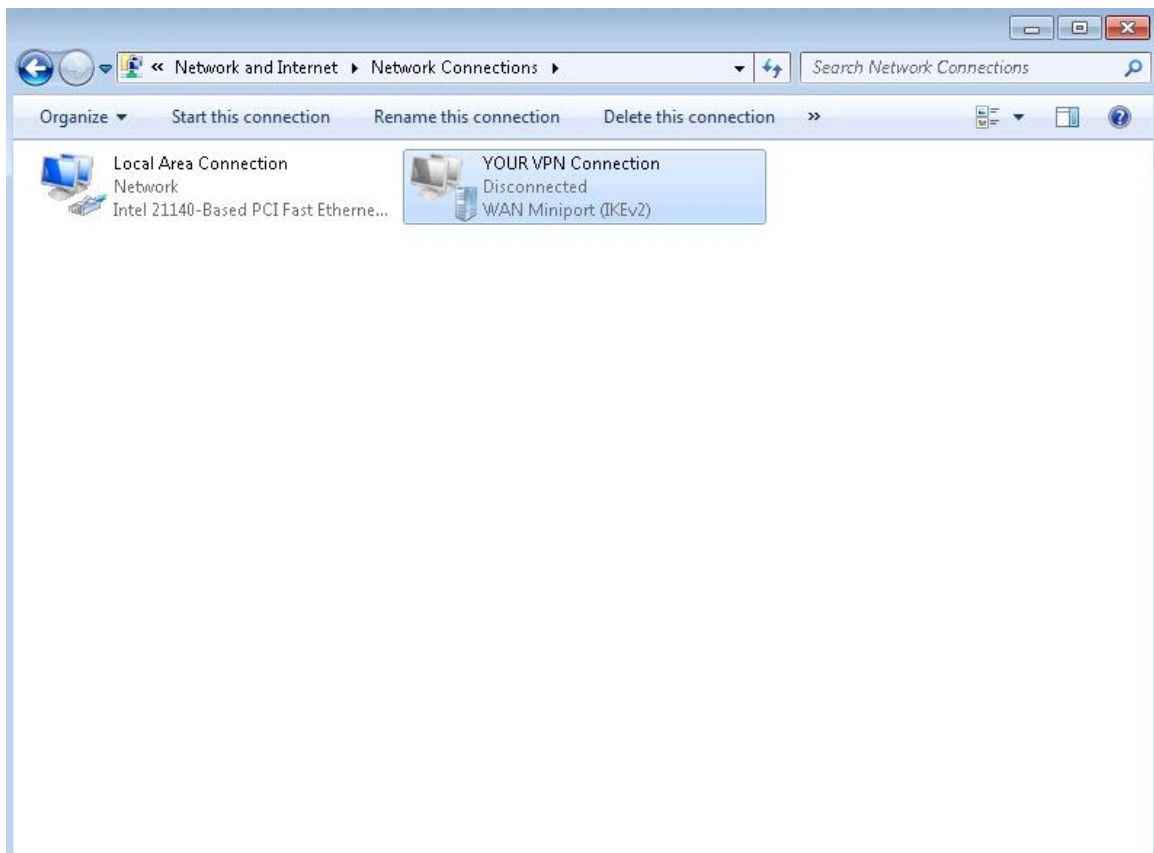
- Do not enter any information here

- Click Create then Close

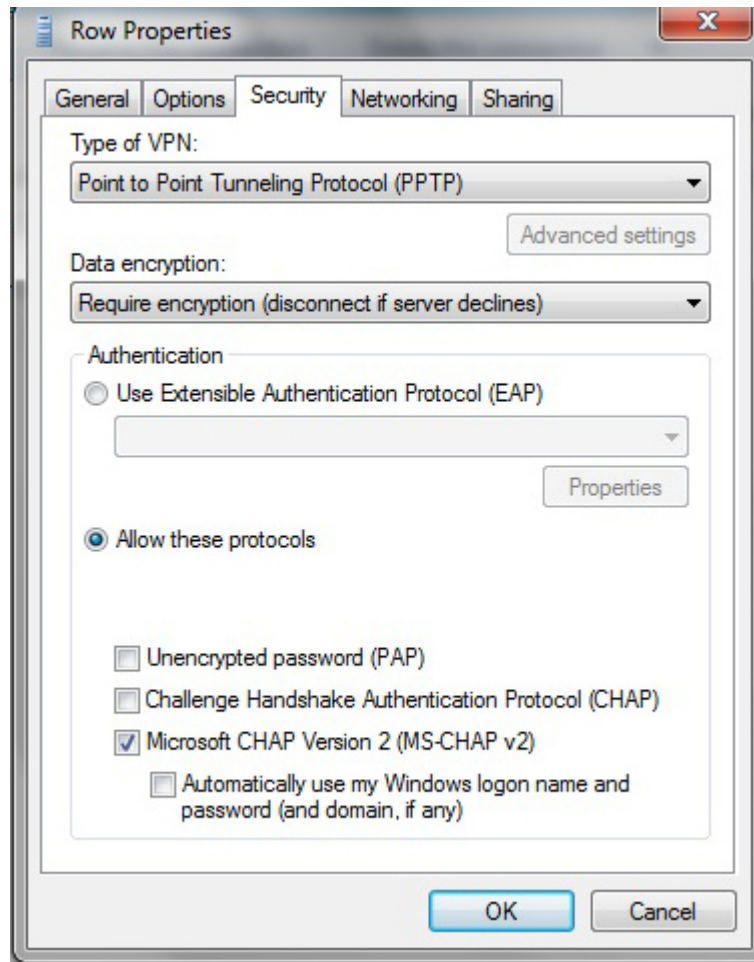


Network and Sharing Center

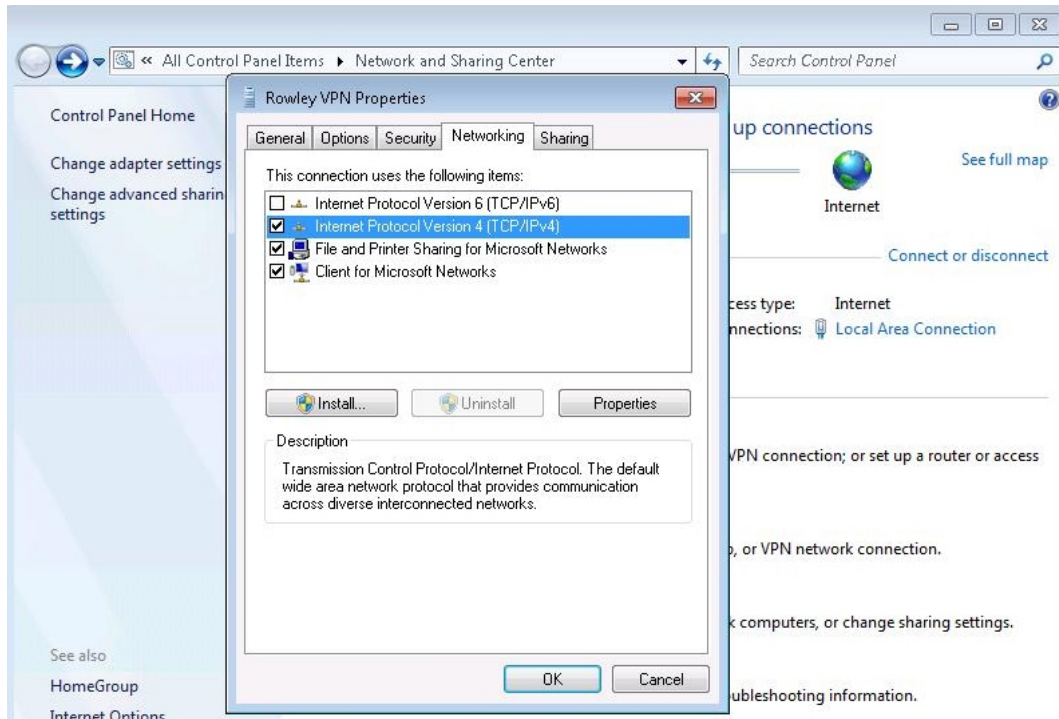
- Click Change Adapter Settings (Upper left)
- Right-Click on your VPN Connection and Select Properties



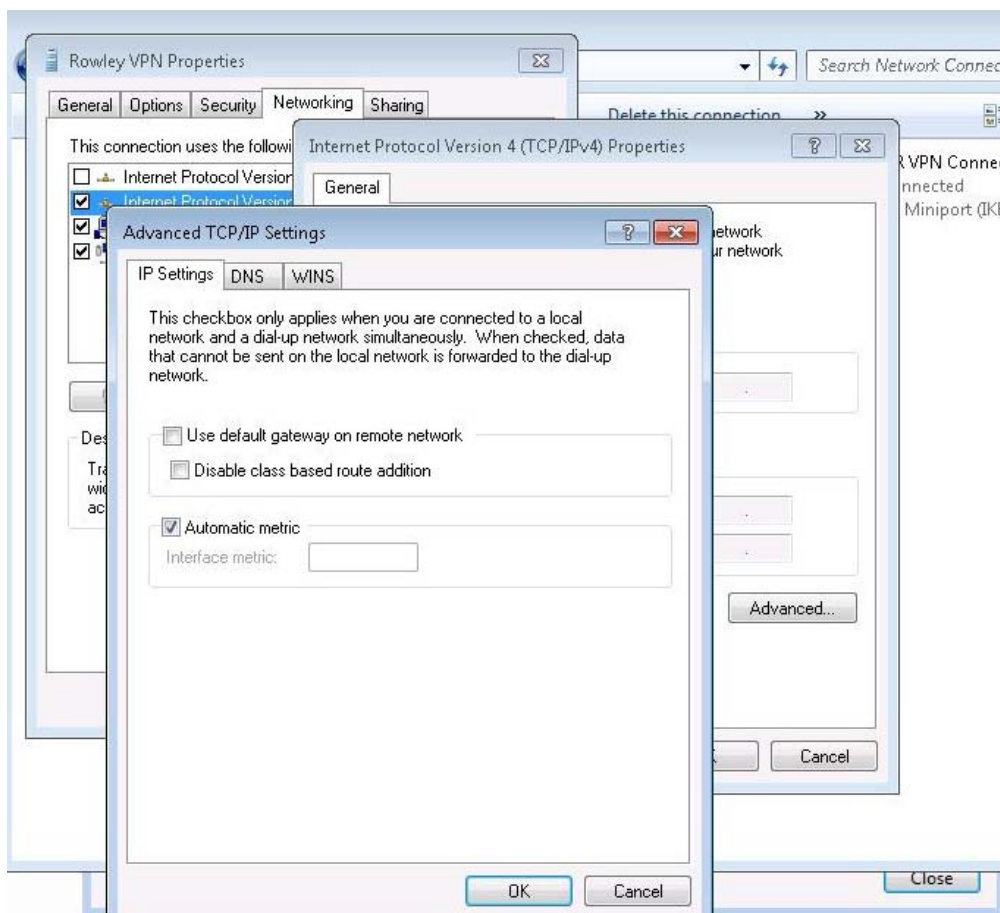
- Click on the Security tab
- Change Type of VPN to PPTP
- Authentication configured as pictured (Remove (CHAP))
 - Allow these protocols
Remove all checks except for Microsoft CHAP Version 2 (MS-CHAP v2)



- Click the Networking tab
- Uncheck Internet Protocol Version 6
- Select Internet Protocol Version 4 and click Properties



- Click Advanced
- Uncheck Use Default Gateway on Remote Network
- Then Click OK 3 times



Network Connections

- Right-Click on your VPN Connection, select Create Shortcut and click Yes
* A shortcut will be created on your Desktop
- Double-click the VPN shortcut on the desktop
- Enter your Username and Password
- DO NOT SELECT Save Password (This is for increased security)
- Click Connect



- When completed you will be securely connected to your office network